



# First United Methodist Church

Weatherford, OK

“Love God, Love Others”

817 N 7th St | PO Box 350  
Weatherford, OK 73096  
(580) 772-5565

[www.weatherfordfumc.com](http://www.weatherfordfumc.com)  
[churchoffice@weatherfordfumc.com](mailto:churchoffice@weatherfordfumc.com)

**May 2024**

## From the Pastor:

### SPIRITUALLY HEALTHY CHURCHES

Here is a sober truth that churches must face, namely: spiritually healthy churches attract and retain spiritually healthy Christians. On the other hand, spiritually unhealthy churches attract and retain spiritually unhealthy people and tend to repel or discourage spiritually healthy Christians. Spiritually healthy Christians tend to migrate out of unhealthy churches, WITH THE EXCEPTION THAT GOD calls some spiritually healthy Christians into unhealthy churches in order to help those churches become spiritually healthier!

Characteristics of Spiritually Healthy Churches. Spiritually healthy churches will concentrate on helping people grow in greater faithfulness to Jesus. This growth is called “sanctification” which takes place after people accept Jesus as Savior and Lord and then begin to grow into Christlikeness.

Spiritually healthy churches EXPECT their people to undergo salvation and sanctification, transformations of life style, putting away sin, to resist evil as a way of life, to develop consecrated relationships with their friends and families, to not be of the world even though they are in the world, to be filled with the Holy Spirit, to not quench the Holy Spirit, to learn to listen to God and to obey God as he tells them how to live their lives. Spiritually healthy churches will teach their people to have their personal finances transformed, they will begin to earn money, save money, tithe money, and give money as if it were God’s money. And the people in spiritually healthy churches will allow and expect God to direct them as to how he wants them to earn, save, invest, and give money away.

Spiritually healthy churches expect that its people will be transformed in how they treat their family, how they love the people around them, how their people treat one another in the church, and even how their people interact with total strangers and how they even look at people when they don’t know we are looking at them. Spiritually healthy churches expect their members’ lives to become a constant blessing to the people around them and to those whom God brings into their paths. Spiritually healthy churches will propel their people onward to be filled with the Holy Spirit, to receive the gifts of the Holy Spirit, to operate in the gifts of the Spirit, and to earnestly seek the higher gifts of the Spirit. Spiritually healthy churches propel their people to develop the fruit of the Holy Spirit as their own personal character.

Spiritually healthy churches love to worship God, and when they worship, they really worship! During worship they pray with gusto, they listen with attentiveness to the Lord’s Word, they sing with gusto, and they fully enter into the work of worship. They would rather be at worship than be engaged in any other activity.

Spiritually healthy churches expect spiritual depth and excellence and seek to develop excellence in their leaders: pastors, staff, elected leaders, Sunday School teachers, Bible study teachers, etc.

These are a few thoughts that I have been jotting down as I have been studying scripture, praying about, and reflecting upon the characteristics of spiritually healthy churches.

By the way, I have a few more Sunday night Bible Studies that I am going to be teaching on the Koinonia Commands. These are from 5:00 p.m.-6:30 p.m. and are about how Christians in a Christian Church are supposed to treat one another.

I also am teaching a Sunday morning Sunday School Class in the Church Library starting at 9:40 a.m. We are studying the book, KEY BELIEFS OF UNITED METHODISTS. I invite you to both classes. And hope you will be in worship during these next ten Sundays before I retire. If any of you are ready to make a profession of faith in Christ and want to be baptized and join the church, it would be an honor to me to be able to help you do these important things before I retire!



Love,

*Pastor Chuck*

Pastor Chuck

May God help us be such a church.

# May 2024



## First United Methodist Church

Weatherford, OK

FUMC public

April 2024							May 2024							June 2024							
S	M	T	W	T	F	S	S	M	T	W	T	F	S	S	M	T	W	T	F	S	
	1	2	3	4	5	6	1	2	3	4				1	2	3	4	5	6	7	8
7	8	9	10	11	12	13	5	6	7	8	9	10	11	9	10	11	12	13	14	15	
14	15	16	17	18	19	20	12	13	14	15	16	17	18	16	17	18	19	20	21	22	
21	22	23	24	25	26	27	19	20	21	22	23	24	25	23	24	25	26	27	28	29	
28	29	30					26	27	28	29	30	31		30							

Sunday	Monday	Tuesday	Wednesday	Thursday	Friday	Saturday
<b>Youth Sunday</b> 28 <ul style="list-style-type: none"> <li>8:30AM Worship Service</li> <li>9:30AM Sunday School</li> <li>10:30AM Worship Service</li> <li>12:00PM Worship Committee</li> <li>3:45PM Mission Team Meeting</li> <li>5:00PM "Sunday Nite Brown Bag Bible Study"</li> </ul>	29 <ul style="list-style-type: none"> <li>6:30PM Prayer Training with Nancy</li> </ul>	30 <ul style="list-style-type: none"> <li>10:00AM Staff Meeting</li> <li>6:15PM Men's Bible Study</li> </ul>	1 <ul style="list-style-type: none"> <li>10:30AM Prayer Training with Nancy</li> <li>4:15PM Handbell Rehearsal</li> <li>5:00PM Midweek Miracle</li> <li>6:00PM Audit Committee</li> <li>6:00PM Care Team</li> <li>6:00PM Kids Khaos and Preteens</li> <li>6:00PM Youth</li> <li>7:00PM Chancel Choir</li> </ul>	2 <ul style="list-style-type: none"> <li>11:30AM Wesley Lunch</li> </ul>	3 <ul style="list-style-type: none"> <li>No Public School</li> <li>6:30PM Rose Rock Daughters – Student Recitals</li> </ul>	4 <ul style="list-style-type: none"> <li>6:30PM Rose Rock Daughters – Student Recitals</li> </ul>
<b>Teacher Appreciation Day</b> 5 <ul style="list-style-type: none"> <li>8:30AM Worship Service</li> <li>9:30AM Sunday School</li> <li>10:30AM Worship Service</li> <li>2:00PM HS Bacallaureate</li> <li>5:00PM "Sunday Nite Brown Bag Bible Study"</li> </ul>	6 <ul style="list-style-type: none"> <li>5:30PM Trustees</li> </ul>	7 <ul style="list-style-type: none"> <li>10:00AM Staff Meeting</li> <li>6:15PM Men's Bible Study</li> </ul>	8 <ul style="list-style-type: none"> <li>4:15PM Handbell Rehearsal</li> <li>5:00PM Midweek Miracle</li> <li>6:00PM Kids Khaos and Preteens</li> <li>6:00PM Youth</li> </ul>	9 <ul style="list-style-type: none"> <li>9:00AM WHS Awards Ceremony with FUMC Scholarships given</li> </ul>	10 <ul style="list-style-type: none"> <li>SWOSU graduation</li> <li>3:00PM Public School Graduation</li> </ul>	11 <ul style="list-style-type: none"> <li>8:00AM Mission Day at Canyon Camp</li> </ul>
<b>Mother's Day</b> 12 <ul style="list-style-type: none"> <li>8:30AM Worship Service</li> <li>9:30AM Fellowship Breakfast</li> <li>9:30AM Sunday School</li> <li>10:30AM Worship Service</li> <li>2:30PM Worship at Homestead</li> <li>5:00PM "Sunday Nite Brown Bag Bible Study"</li> </ul>	13 <ul style="list-style-type: none"> <li>1:00PM PEO</li> </ul>	14 <ul style="list-style-type: none"> <li>10:00AM Staff Meeting</li> <li>12:00PM UWF @ Pioneer St. Center</li> <li>6:15PM Men's Bible Study</li> </ul>	15 <ul style="list-style-type: none"> <li>4:15PM Handbell Rehearsal</li> <li>6:00PM Youth Red Rose Banquet</li> </ul>	16 <ul style="list-style-type: none"> <li>Last Day of Public School</li> </ul>	17 <ul style="list-style-type: none"> <li>8:00AM Mission Day at Canyon Camp</li> </ul>	18 <ul style="list-style-type: none"> <li>8:00AM Mission Day at Canyon Camp</li> </ul>
<b>Pentecost</b> 19 <ul style="list-style-type: none"> <li>8:30AM Worship Service</li> <li>9:30AM Sunday School</li> <li>10:30AM Worship Service</li> <li>2:30PM Worship at Homestead</li> <li>3:30PM Christian Involvement and Fellowship</li> <li>5:00PM "Sunday Nite Brown Bag Bible Study"</li> </ul>	20 <ul style="list-style-type: none"> <li>5:30PM Finance</li> </ul>	21 <ul style="list-style-type: none"> <li>10:00AM Staff Meeting</li> <li>6:15PM Men's Bible Study</li> </ul>	22 <ul style="list-style-type: none"> <li>4:15PM Handbell Rehearsal</li> </ul>	23 <ul style="list-style-type: none"> <li>Annual Conference</li> </ul>	24 <ul style="list-style-type: none"> <li>Annual Conference</li> </ul>	25 <ul style="list-style-type: none"> <li>Annual Conference</li> </ul>
26 <ul style="list-style-type: none"> <li>8:30AM Worship Service</li> <li>9:30AM Sunday School</li> <li>10:30AM Worship Service</li> <li>12:15PM "Pizza With The Pastor"</li> <li>5:00PM "Sunday Nite Brown Bag Bible Study"</li> </ul>	27 <ul style="list-style-type: none"> <li>Church Office Closed</li> <li>Memorial Day</li> </ul>	28 <ul style="list-style-type: none"> <li>10:00AM Staff Meeting</li> <li>6:15PM Men's Bible Study</li> </ul>	29 <ul style="list-style-type: none"> <li>7:00PM Chancel Choir</li> </ul>	30 <ul style="list-style-type: none"> <li>Annual Conference</li> </ul>	31 <ul style="list-style-type: none"> <li>Annual Conference</li> </ul>	1 <ul style="list-style-type: none"> <li>Annual Conference</li> </ul>

# Teen Talk

It is not too late to sign up for Summer Camp! CLUE at Canyon Camp is for incoming 6<sup>th</sup> graders to 2024 graduates. The dates for this camp are June 3-7. The cost is \$412. The church will pay \$183.50 of this cost and you will pay the rest. However, if you need help with your part, let Kelley Ramey know and she will make sure and find funds for you. She loves to see all youth that want to go to camp be able to and doesn't want cost to be a reason why they don't go. When you register, be sure and mark that your church will send the payment and then send your part, \$228.50, to the church. You will register online at [Login | Oklahoma United Methodist Camps \(campbrainregistration.com\)](https://campbrainregistration.com).

The youth will be hosting a Red Rose Banquet on Wednesday, May 15, at 6:00pm in the Fellowship Hall to honor our seniors and thank them for all they have done for us while they have been in youth. Our seniors are Hollis Beam, Witten Beam, and Logan Doyals. If you would like to go to the Red Rose Banquet, contact Kelley Ramey at the church 580-772-5565 and let her know.

The church is having a Mission Day at Canyon Camp on Saturday, May 18. The church van will leave at 8:00am and return by 5:00pm. Lunch will be provided at camp. Be sure and wear closed toe/heel shoes and bring a pair of work gloves. Sign up at the Ryden Welcome Center if you plan to go.



## KID STUFF



### May 8th is the Last Kids Khaos of the school year!

We will have an end of the year party that evening to celebrate a great year! But there will still be activities this summer: don't forget to sign up for Vacation Bible School and for Summer Camp at Canyon Camp!



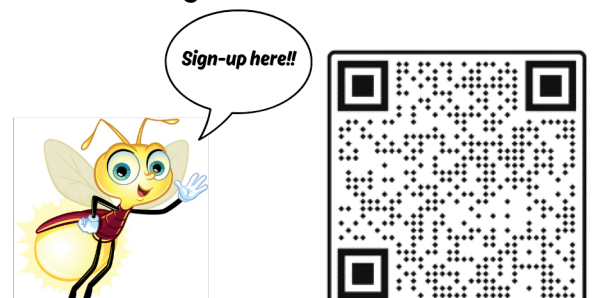
## Join Us at Camp Firelight: Vacation Bible School!



Gather 'round the campfire and Explore the light of faith, the joy of fellowship, and the wonders of God's love through exciting activities, interactive lessons, and inspiring stories! Meet Our Leaders, Lu and Counselor Sam, who will introduce each days Firelight Focus!

Children will enjoy a meal each night with their fellow "campers" in addition to playing fun games, doing some wacky crafts, singing songs, and reliving the bible story. All children are welcome, free of charge.

Each evening  
June 23 - 27  
5:30pm - 8:00pm



Sonshine Camp  
1st & 2nd Grade  
June 15-16, or July 13-14

Growin' in Grace Camp  
2nd Grade - 5th Grade  
June 10-12, or July 8-11

# SUMMER CAMPS

CLUE Camp  
6th Grade - HS Grad  
June 3-7

## Sonshine

Ages: 1st - 2nd Grade

Dates: June 15 - 16, 2024; July 13 - 14, 2024

Sonshine is an introductory camp for our youngest campers. This is also a place for parents (known as shepherds) to experience camp with their children in this one-night camping adventure. Campers will return with stories of hiking, swimming, and new outdoor adventures through age-level designed activities and creative worship. Join us as we grow our faith and have some fun!

NOTE: Each church is required to send 1 shepherd for every 1-5 campers; shepherds must be of the same gender. For example, if a church plans to send 2 male and 3 female campers they would need to send at least 1 male and 1 female shepherd.

Camper Price: \$110

Adult (Shepherd) Price: \$77

Register Online at

<https://okcamps.campbrainregistration.com/>

## Growin' in Grace

Ages: 2nd - 5th grade

Dates: June 10-12; July 8-11, 2024

Growin' in Grace is a 3-day & 2-night camp focusing on age-appropriate activities in God's creation. In addition to hiking, swimming, recreation, and crafts, campers participate in interactive small-group learning and creative worship. Campers can build relationships with others from across the state.

Please Note: Leaders will be responsible for leading a small group or activity area, as well as for their cabins.

Camper Price: \$241

Adult Leader Price: \$122

Register Online at

<https://okcamps.campbrainregistration.com/>

## CLUE Camp

Ages: 6th - Grad year

Date: June 3 - 7, 2024

CLUE, at Canyon Camp, is a five-day opportunity for students to encounter and be encountered by God's grace. Our mission is to be a vision of God's kingdom here on earth, by bringing campers from all walks of life together for a meaningful week of spiritual awakening and growth. As an ecumenical camp hosted by OK Camps, CLUE is a chance for churches of any denomination to send their youth and leaders to a summer camp focused on God.

While at camp, campers engage in small groups, worship, prayer, Bible studies, workshops, fellowship, and fun in an ecumenical setting that is open to all churches. Campers will experience what it means to live in and be part of the wider Christian community. That communal understanding builds the deep sense of "family" that exists amongst CLUE campers of the past, present, and future, and our hope is for that deep connection to spread throughout our camp, our churches, and our world.

"This was by far the best week of my life, and I wouldn't trade it for anything!" - Camper

Camper Price: \$412

Adult Leader Price: \$249



# FUMC Mission Day



@ CANYON CAMP

MAY 18  
8AM - 5PM

The Mission Team has planned a Mission Day at Canyon Camp on May 18 for the whole church. The church van will leave from the north parking lot at 8:00am. The team will eat lunch at camp and will return to Weatherford by 5:00pm. Wear closed (toe/heel) shoes and bring a pair of work gloves. Please sign up at the Ryden Center by May 8th to let us know how many will go.

If you have any questions, contact Kelley Ramey at the church, 580-772-5565.

## Welcome to our new Memory Care Director!

We want to welcome Bailey Hanes to our staff as the Director of the FUMC Memory Respite Care Ministry! She will be working part time. The Board of the FUMC Memory Respite Care Ministry interviewed her and is excited about the gifts she will bring to this new ministry in our church.

Bailey Hanes is a senior Music Therapy major who will graduate from SWOSU in May. She was a vocal intern at our church for her first few years in Weatherford. She has been active at SWOSU Wesley since she was a freshman and is the worship band leader as well a member of the Wesley Leadership Team.

Bailey says, “As a music therapy student, we do field studies with a different population every semester. We create, write, and lead music therapy sessions under the supervisor assigned to oversee us. One group that has really touched my heart in these sessions are those in the memory care settings.” She works part time at Corn Heritage Village.

She also states “This population, particularly those affected with Alzheimer’s have a special place in my heart. My grandfather had Alzheimer’s and seeing how difficult it was for him stuck with me. I am so honored and excited to do what I can to contribute to improved quality of life and overall enrichment in this new program at FUMC.”

Welcome Bailey!

## Volunteers needed!

We are starting a new ministry as a part of our church! Beginning in June, we are planning to host a Memory Care Respite Ministry once a week in our building. This ministry will provide relief for caregivers of loved ones with memory issues by providing a loving and interactive environment for clients a few hours each week, thereby giving respite to the primary caregiver.

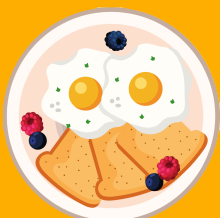
Volunteer shifts are only 3.5 hours long (from 9am to 12:30pm). Call the church office if you have questions or would like to volunteer. Our new director, Bailey Hanes, will get back with you shortly.

Are you a  
*crafty* person?

Do you like  
bulletin boards?

**We are looking for someone to decorate (or coordinate decorating) three of the bulletin boards in our church hallways once a month.**

**If you are willing to help, please call the church office and speak with Mason.**



## Fellowship Breakfast

Sunday, May 12th, at 9:30am

Church Wide Pot-Luck!

This month's Fellowship breakfast will be a church-wide pot-luck!. Join us in the Fellowship Hall during the Sunday School hour on this Mother's Day for delicious breakfast treats and a time of togetherness!



# THE WESLEY

SOUTHWESTERN OKLAHOMA STATE UNIVERSITY

Hello Weatherford FUMC!

I want to thank you all for your support throughout this spring semester! As partners in ministry, you have proven again and again how invaluable you are as a loving community for all of our SWOSU students. I look forward to the many ways we will continue to serve and strengthen the faith of our students.

As we close out this school year, I want to ask that you all continue to pray for all of our SWOSU students. Finals week is hard, and for so many, the summer months prove hard to navigate.

Please be on the lookout over this summer for ways you can support our Wesley Foundation in getting ready for next school year! We have several smaller sized maintenance needs to complete, and I know if we work together, we will continue to build a place where SWOSU students will truly find a "home-away-from-home".

Again, I thank you all for your continued support and prayers!



With the Joy of Christ,

Corey Shirey

Exec. Dir. & Campus Minister  
SWOSU Wesley Foundation



Join us during both services to show our appreciation to the teachers of our church on May 5th.



United  
Women  
in Faith

## NEWS from United Women in Faith (UWF)

### April UWF meeting

**May 14 @ 12 noon – Pioneer Sr Center, 1000 Gartrell Blvd – Activity Room**

UWF meets on May 14, 2024 at 12:00 noon in the Weatherford Pioneer Center-Activity Room at 1000 Gartrell Place with the program covering Prayer & Self Denial. A Prayer & Self Denial offering will be taken. This year's focus is on the Climate Crisis and projects we can support that can make a difference. We will also work on a mission project to provide a 'Beauty Day Opportunity' for the Women's Shelter Residents. Mark your calendars for this date and time – bring a brown bag lunch – and enjoy the fellowship of UWF. You can always head back to work by 1:00 p.m. if needed, and the meeting will continue until 1:45 p.m. with a planning session after the speaker.

### Thank you UWF for providing Easter Meal

A special thank you is shared with the individuals who were able to prepare and provide the Easter Meal for the Women's Shelter in Clinton. Ham, sweet potatoes, veggies, salads, bread, and dessert items were shared to bring support to the women and the mission. Thank you to Madella Shelton for being able to deliver the food items.

### Cimarron District UWF Day Apart Report

Faye Henson attended the Cimarron District UWF meets at Waynoka on April 13, 2024 for a Day Apart program focusing on The Lord's Prayer. The group also had a preview of Mission U which will happen July 18-20, 2024 at Oklahoma City University. The Mission U Leadership Team members includes Faye Henson and Corey Shirey from FUMC Weatherford.

### Everyone - Planning ahead – UWF/Laity Sunday

The Weatherford UWF unit decided to wait to hold UWF/Laity Sunday later in the year when we have our new pastor in place. We would also like to invite our new District Superintendent Rev. John Breon so the congregation can have a chance to meet him.

### Join us for Mission U – July 18-20, 2024

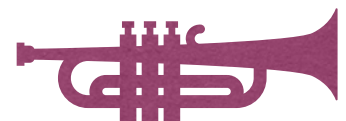
UWF asks you to mark your calendars to attend Mission U this summer! This is the second year of a study that focuses on the Lord's Prayer. The theme – The Kin-dom Is Among You: Drawing Closer to God and One Another. There will be sessions for adults, youth, and children. Click on this link to find the Mission U site on the UWF web site. [Mission u | United Women in Faith \(uwfaith.org\)](https://www.uwfaith.org/mission-u) The adult, youth and children's curriculum is available on the website.

- [Welcome Home: Adult Curriculum](#) by Neomi Fletcher
- [Cultivating Symbiosis: The Nature of God's Kin-dom. A Youth Curriculum](#) by Nica Sy
- [Me in the Kin-dom: A Children's Curriculum](#) by Kathy Cook

This will be an opportunity to dig deeper into the meaning of this important prayer we all know, enjoy some special music, and participate in the way UWF supports women, youth, and children in mission. We will make an announcement when the registration link is opened.



*Madella says, "Please come to the community band concert on May 2nd at 7pm in the Fine Arts building on the SWOSU Campus. Come support our church members who are players, and listen to some great music!"*





**FIRST UNITED METHODIST CHURCH**

817 N 7th St  
PO Box 350  
Weatherford, OK 73096

*RETURN SERVICE REQUESTED*

**May 2024**

**CONGRATULATIONS  
GRADUATES!**



WHS HOLLIS BEAM  
WHS WITTEN BEAM  
WHS LOGAN DOYALS

SWOSU LO'REN BALLARD  
SWOSU BAILEY HANES

# DATES TO REMEMBER

- Wed, May 1 **Care Team** meets at 6pm
- Sat, May 4 Bailey Hanes Senior Recital, Music 101 on SWOSU campus @ 3pm
- Sun, May 5 Teacher Appreciation Sunday (both services)  
HS Baccalaureate (at First Baptist at 2pm)
- Mon, May 6 **Trustees** meet at 5:30pm
- Wed, May 8 last **MIDWEEK MIRACLE** of semester - **BBQ dinner** 5-6pm
- Fri, May 10 WHS Awards Ceremony (students receive church scholarship) 9am  
Lo'ren Ballard gives her senior recital in sanctuary at 5pm

- Sat, May 11 SWOSU and WHS Graduation Day
- Sun, May 12 **Mother's Day and Church-wide Fellowship Breakfast**
- Tue, May 14 **UWF** at Pioneer Sr Center at noon
- Wed, May 15 **Youth Red Rose Banquet** honoring graduating seniors
- Sat, May 18 **FUMC Weatherford - MISSION DAY AT CANYON CAMP**
- Sun, May 19 Pentecost - special music by Wesley Band  
**Christian Involvement and Fellowship Team** meets at 3:30pm
- Mon, May 20 **Finance** committee meets at 5:30pm
- Sun, May 26 Last **Pizza with the Pastor** with Chuck & Nancy, after 2nd service
- Thu, May 30 Annual Conference May 30 - June 1